



June 13-15, 2016

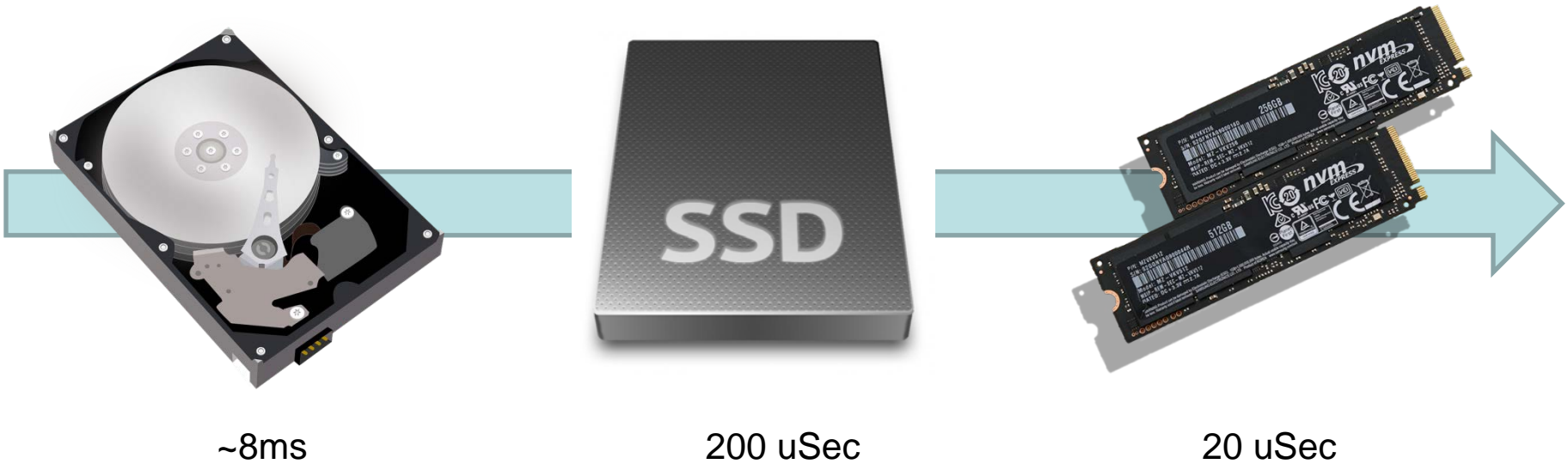
| Marriott San Mateo

| San Mateo, CA

Dealing With The “Other” Latency: What The Cloud Portends For IT Infrastructure

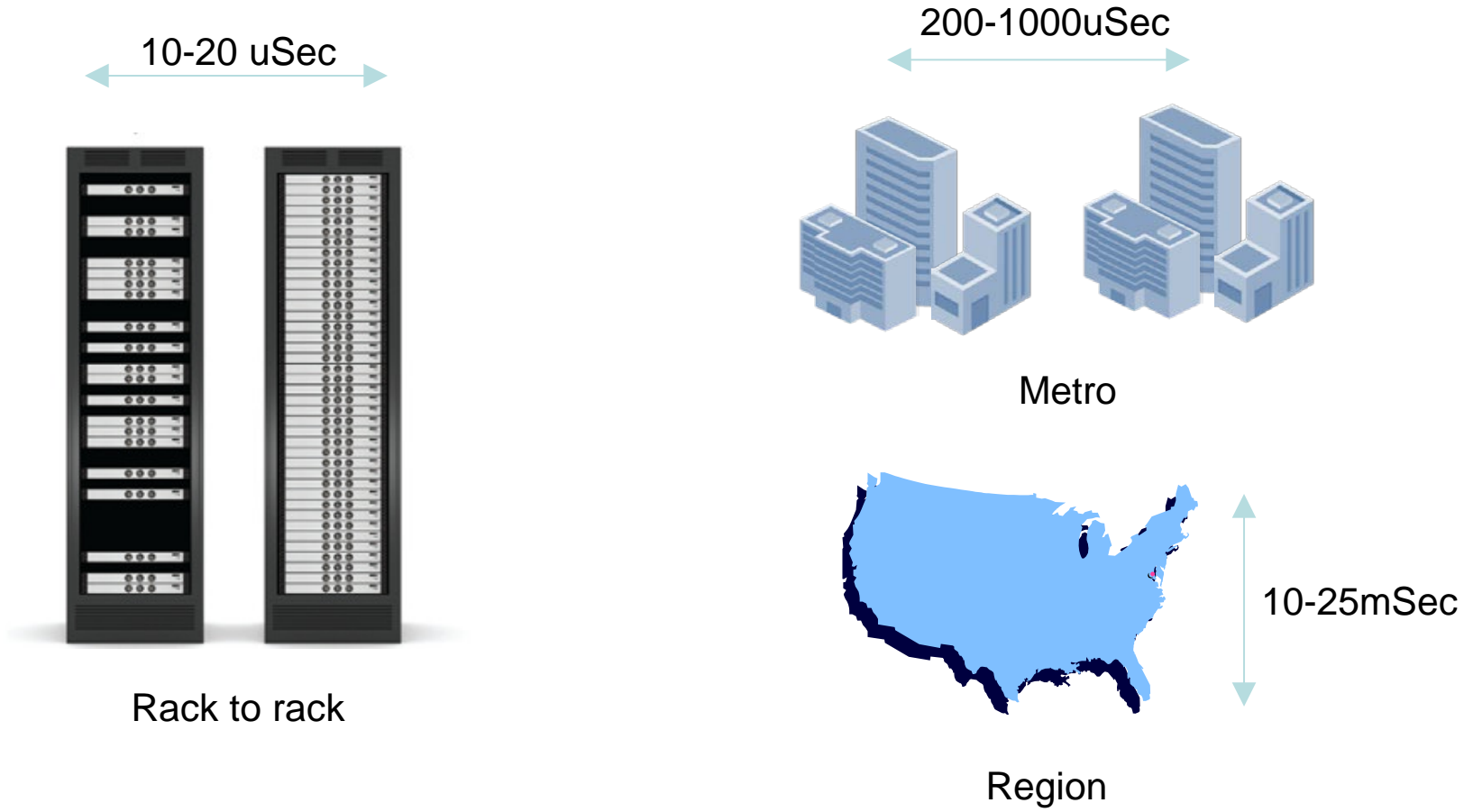
Laz Vekiarides
ClearSky Data

What Is Tolerable Latency?

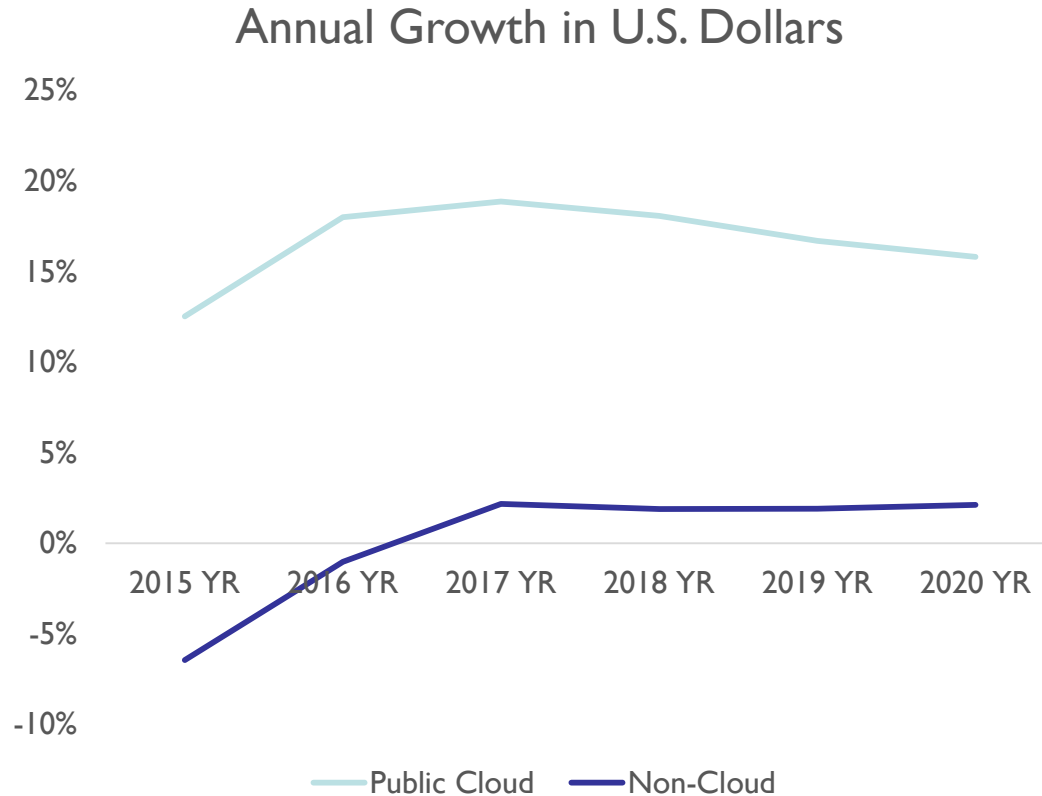


- ❑ Expected latencies are trending down
- ❑ Applications still recommend 10ms or less as an average

The New Bottleneck is Distance



Most Growth is in the Public Cloud



Source: "Gartner Market Databook, 1Q16 Update," March 2016 (G00296771) and "Gartner Cloud Forecast," 1Q16 Update, April 2016
BPaaS = business process as a service; IaaS = infrastructure as a service;
PaaS = platform as a service; SaaS = software as a service

Yet Public Clouds Are Most Distant



- ❑ Cloud locations driven by real estate factors
 - ❑ Power costs
 - ❑ Cooling
 - ❑ Land value

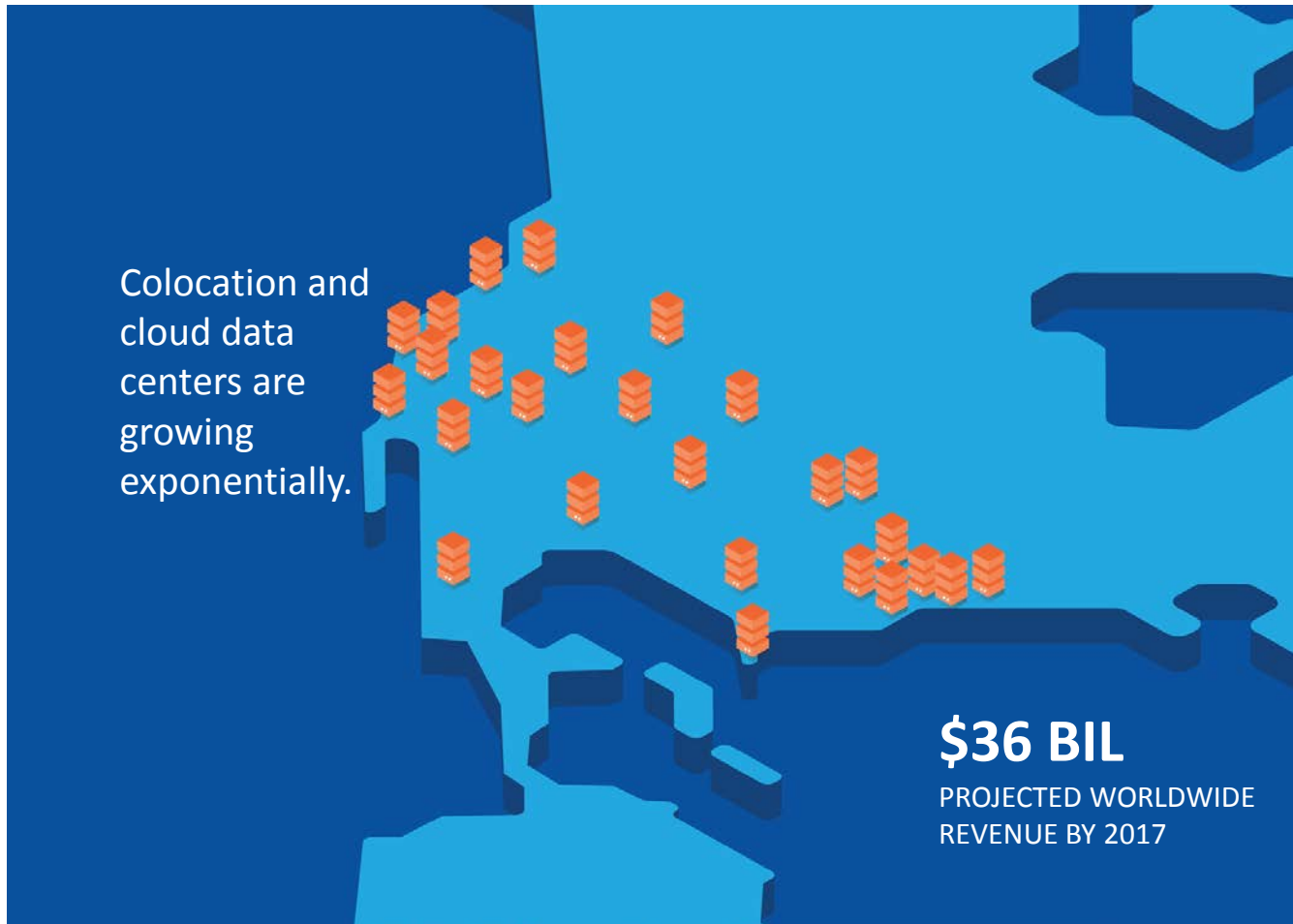
5

A New Enterprise Architecture Is Emerging

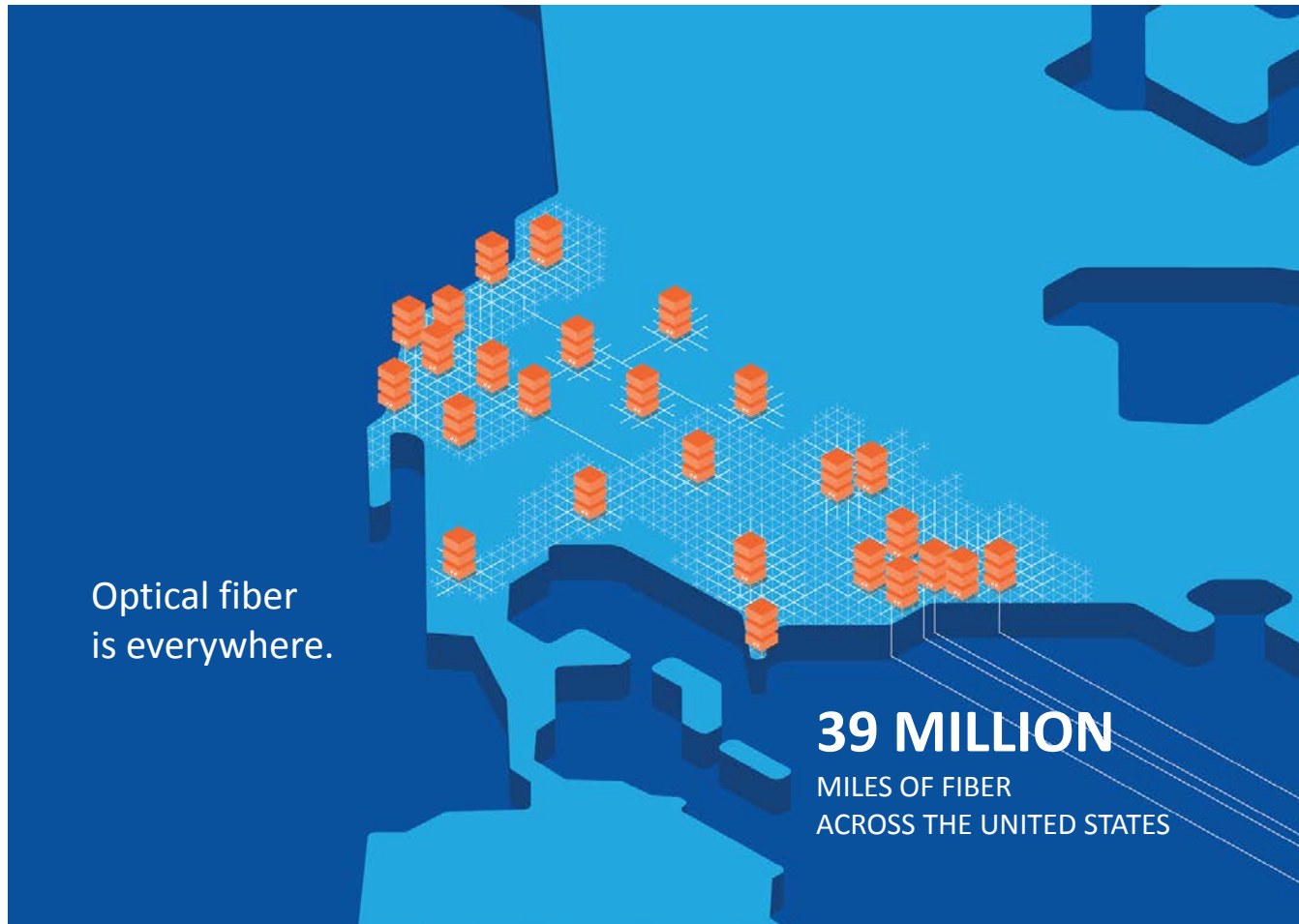
- ❑ Low latency storage is nice but...
 - ❑ Most data will be living across a network
 - ❑ At least some compute and storage will be in a public cloud
 - ❑ Everyone is NOT moving to northern Virginia to be close to their data
- ❑ New systems will need to be networked to optimize for lowest latency
- ❑ A new set of components must be used

6

Colocation



Connectivity



Metro-Clouds

Data centers are becoming cloud hubs.



The Data is the Problem.



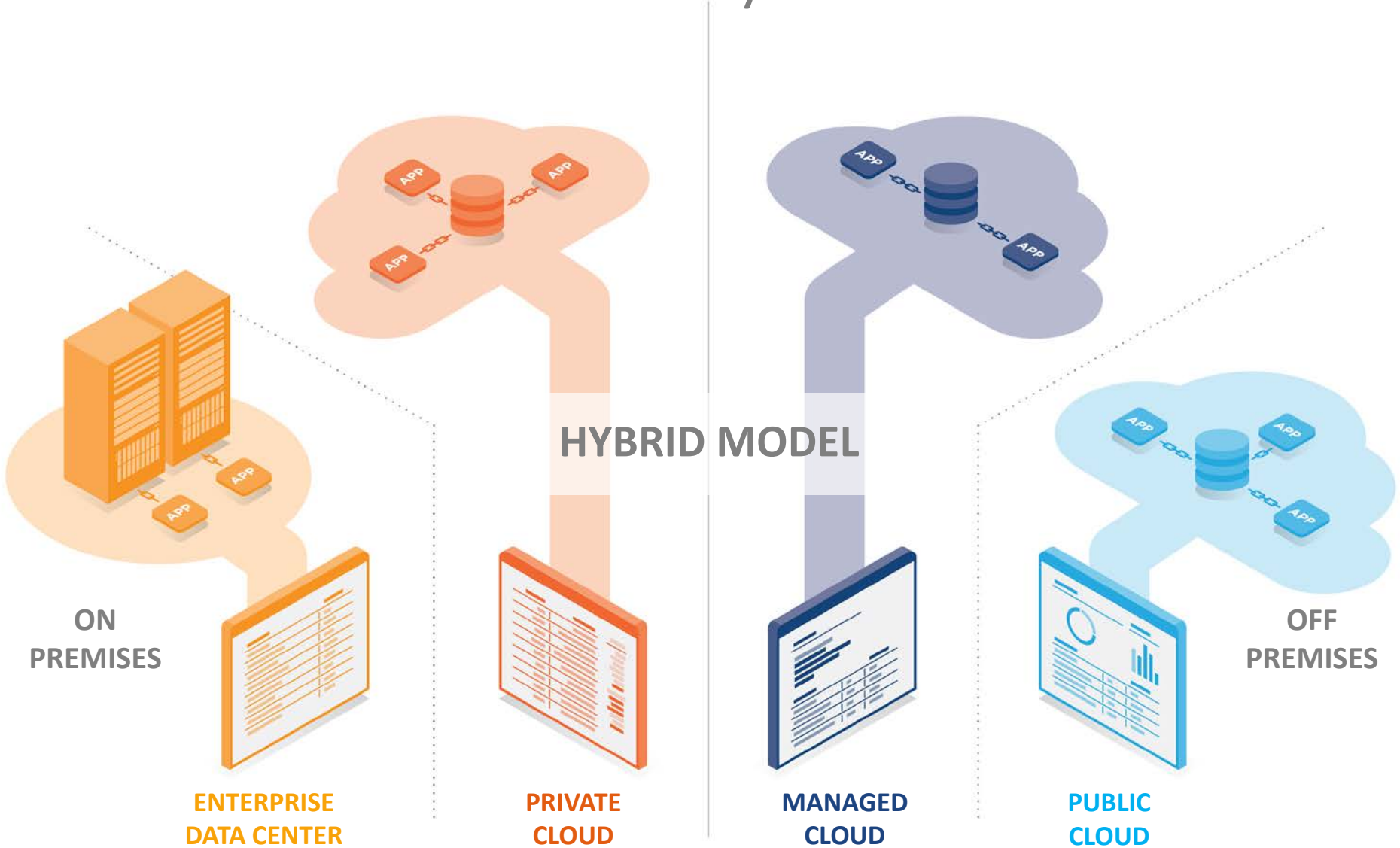
COMPANES DELIVER AN AVERAGE OF

ONLY 18%

OF THEIR WORKLOADS FROM THE CLOUD
TODAY.



The New Architecture is Hybridized.



Emerging Connectivity-Focused Model



Metro Ethernet Access Network



Dedicated Cloud Networks



Leverage colo connectivity marketplace for:

- Low cost, low latency user bandwidth
- Dedicated single-hop connections to clouds
- Optimized cost
- Optimized latency

The ClearSky Network at a Glance



Solving the Data Challenge

The ClearSky Global Storage Network



HIGH PERFORMANCE

LOW LATENCY

ELASTIC

SECURE

FULLY MANAGED



2016 Data Storage Innovation Conference. © Insert Your Company Name. All Rights Reserved.

CONFIDENTIAL

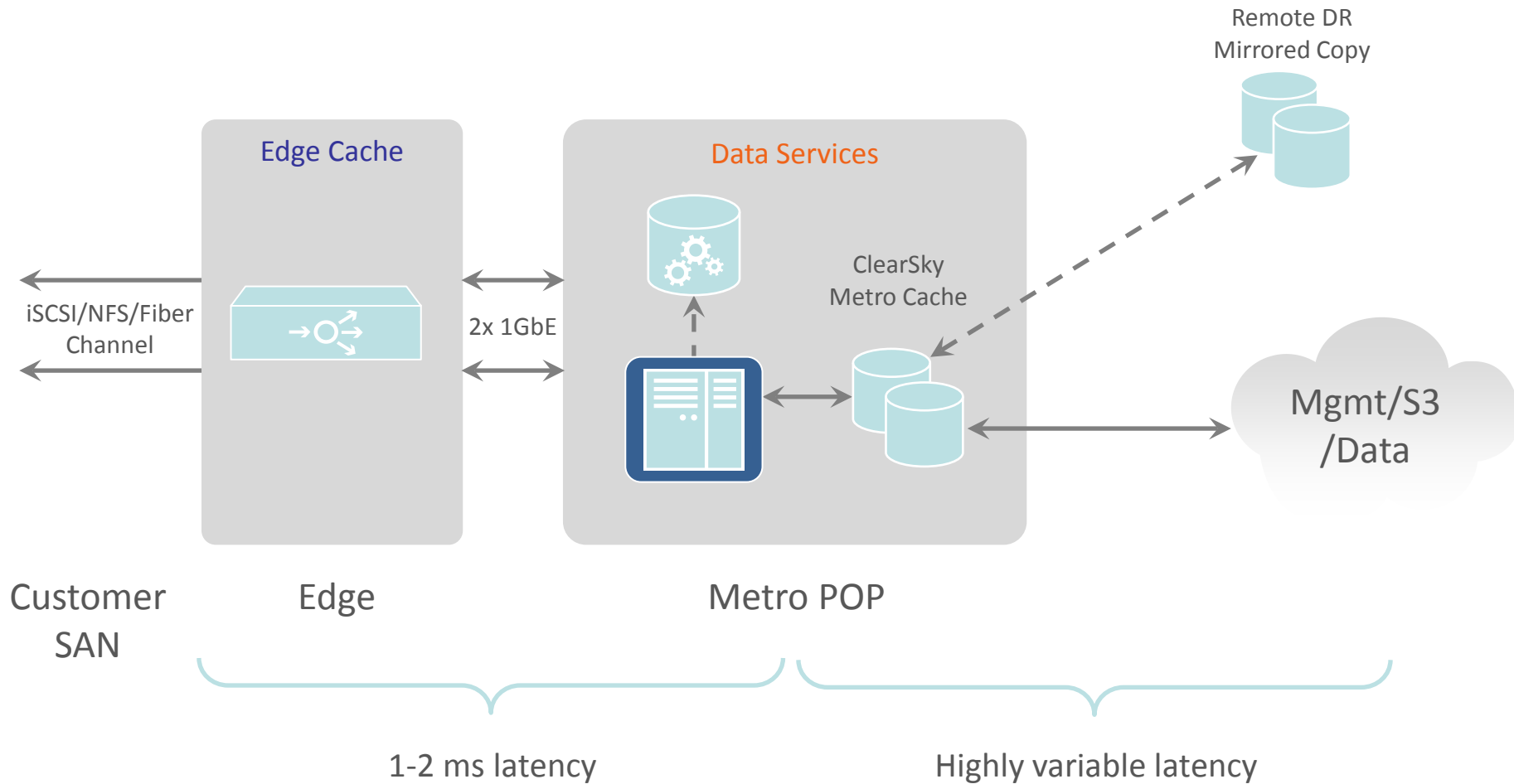


A Dedicated Storage Network is Essential.



ACCESS all your data,
ANYWHERE it resides,
ANYTIME you need it.

The ClearSky Data Architecture



Many Other Possible Services

- ❑ Private CDN's
- ❑ On-Demand high speed network services
- ❑ Disaster recovery services
- ❑ Privately connected cloud compute
- ❑ Many more...

Thank You!

