



SDC

STORAGE DEVELOPER CONFERENCE

SNIA ■ SANTA CLARA, 2017

SMB Client synergy

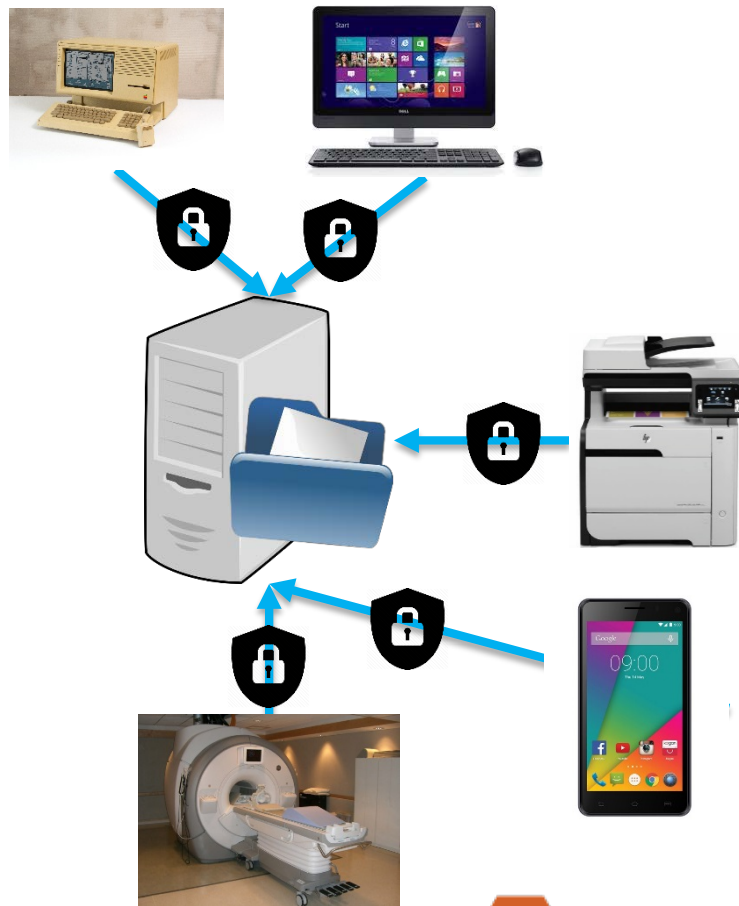
Panelists:

- David Goebel
- Bill Conway
- Jeremy Allison
- Steve French
- Jim McDonough
- Mark Rabinovich



Background

- ❑ Anything can be an SMB client
- ❑ Plugfest room
- ❑ Connect to the same SMB server
- ❑ SMB3



SMB today

“I have bad news for **SMB1** and good news for people”

- ❑ No more SMB1
 - ❑ Wannacry/Petya
 - ❑ RedStone R3
- ❑ SMB3 highlights:
 - ❑ End-to-end encryption
 - ❑ Transparent Failover
 - ❑ Scale Out
 - ❑ Multichannel
 - ❑ Directory Leasing



Microsoft's Ned Pyle, program manager of the SMB protocol



NQE Client – Visuality Systems



- ❑ Platforms:
 - ❑ Any
- ❑ Usage:
 - ❑ Embedded / IOT
 - ❑ Mobile
 - ❑ Storage systems from standalone to high-end
- ❑ Commercial license



Apple Client



- ❑ Platforms:
 - ❑ Mac OS X
- ❑ Usage:
 - ❑ Desktops, laptops
 - ❑ Default file sharing protocol



- ❑ Platforms:
 - ❑ Unix/Linux/Android/ChromeOS.
- ❑ Usage:
 - ❑ Desktops, laptops, web devices.
- ❑ Available as a library plug-in for other programs.
- ❑ Free Software under GNU GPLv3 license.



- ❑ Platforms:
 - ❑ Unix/Linux
- ❑ Usage:
 - ❑ Desktops, laptops, cloud based VMs
- ❑ Command-line ftp-like client available for scripting purposes.
- ❑ Free Software under GNU GPLv3 license.



Microsoft Client



- ❑ Platforms:
 - ❑ Windows operating systems
- ❑ Usage:
 - ❑ Desktops, laptops, smart devices, cloud based VMs



Connecting to Azure SMB server



- ❑ Biggest SMB server in the world in terms of usage
- ❑ Port 445 outbound must be open
- ❑ SMB 2.1 and 3.0 currently supported.
- ❑ Accepting only encrypted connections from the internet.
Within the data center unencrypted allowed if the client doesn't support it.



Let's begin...

