

The logo for Storage Developer Conference 2018 (SDC 18) features the letters 'S', 'D', and 'C' in a large, white, sans-serif font. The number '18' is positioned inside the 'C'. The background of the logo area is dark blue with a white wireframe pattern of overlapping rectangular shapes.

SDC 18

September 24-27, 2018
Santa Clara, CA

www.storagedeveloper.org

File System Test Results Analysis

Ariday Balderas (ariday@mx1.ibm.com)

Drew Olson (drolson@us.ibm.com)

Julian Cachua (cachuaju@mx1.ibm.com)

IBM

Filesystem CI Development Cycle

- ❖ Multiple functional teams
- ❖ Specialized areas
- ❖ Complex scenarios
- ❖ Tight release schedules

- ❖ Test Automation is the *preferred* approach to assure quality.



Complicated Scenario

- ❖ End up with thousands of validation scripts.
- ❖ Execution time increases.
 - ❖ Infrastructure issues probability raises.
- ❖ Review automation results requires more human intervention.
- ❖ If distributed, manual test analysis can result in inefficiencies.



Implications

- ❖ Test Automation value decreases.
- ❖ False positives raise.
- ❖ CI quality report becomes misleading.
- ❖ Human effort to clarify status.
- ❖ Test teams need to grow to accommodate test analysis.



Test Analyzer Library

- ❑ CI focused framework to help us analyze test results and provide verdicts with the least possible human intervention.

Questions on Failure Analysis



What

- Culprit
- Test hierarchy
- Test Suite / Test Case



When

- First time?
- Last success?
- Version



Where

- Cluster
- Node
- Re-creatable



How

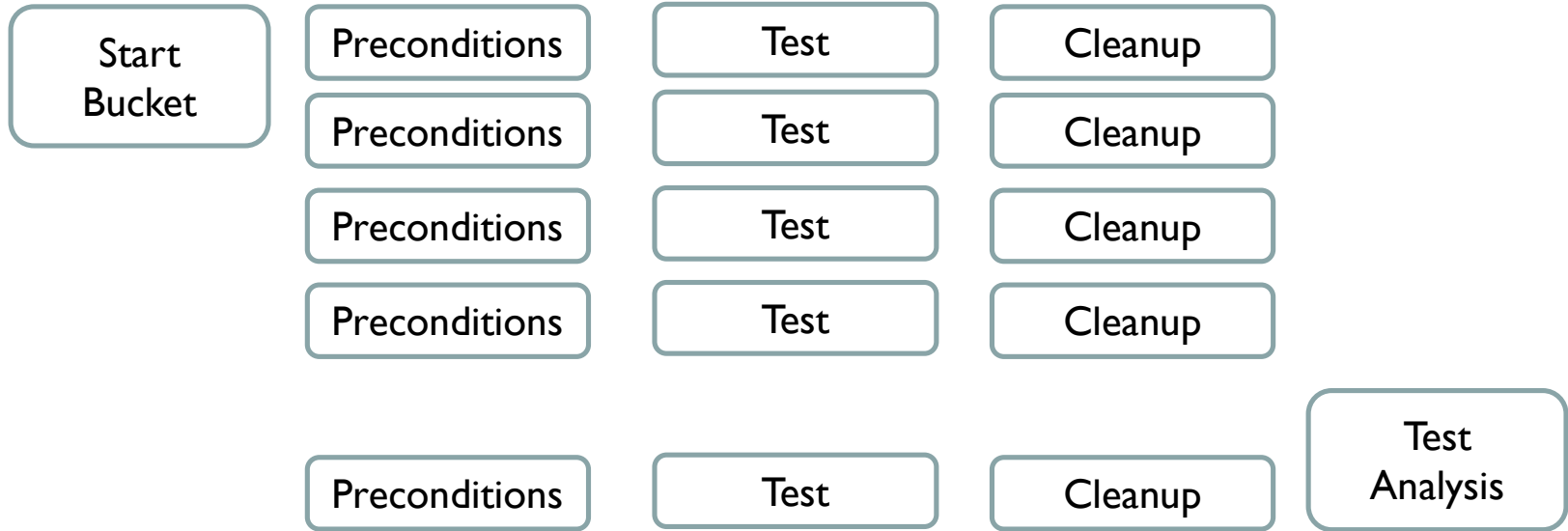
- Did it happen?
- Installation type?
- Often?

Highlights

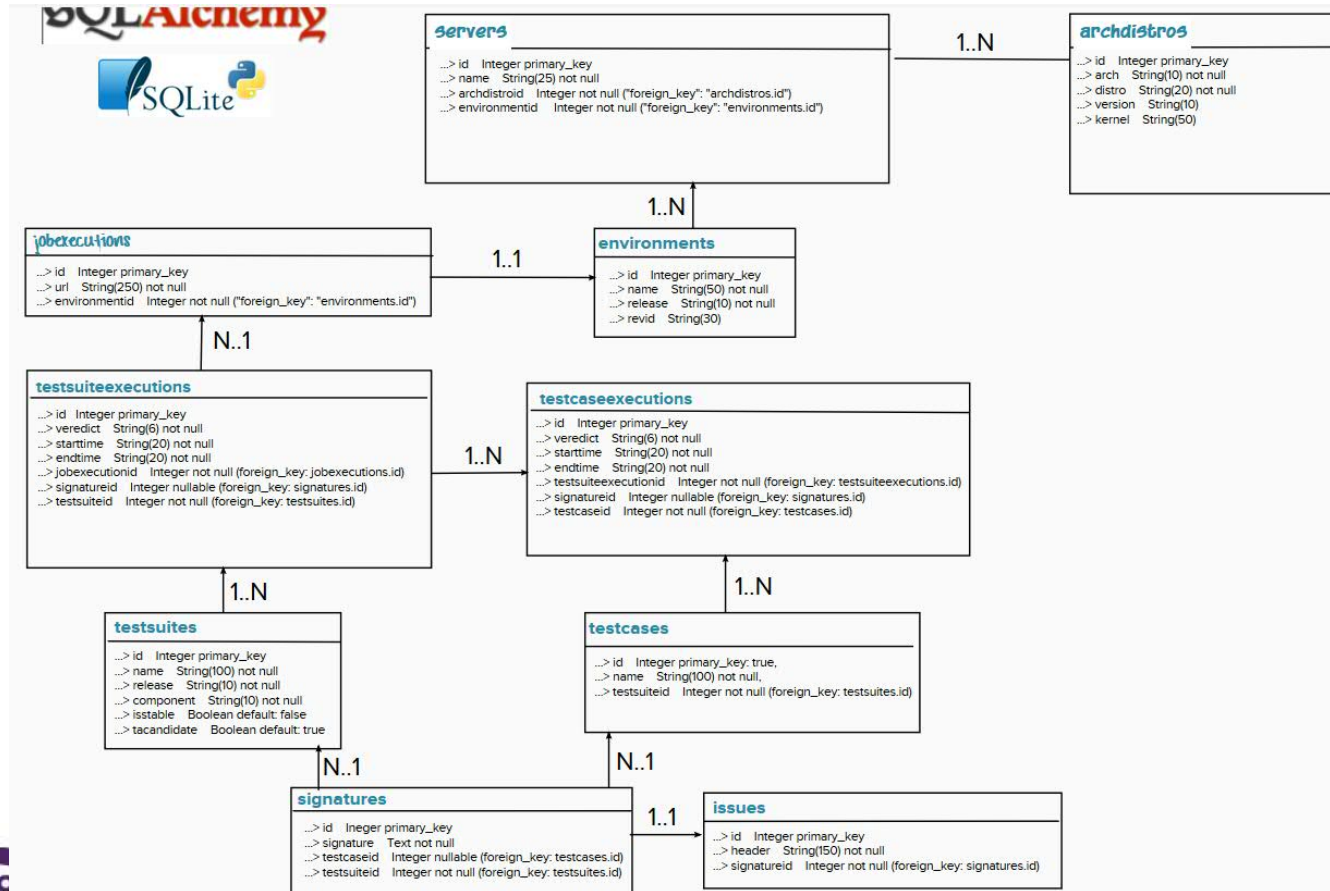
- ❖ Data Schema → # bin/testanalyzer init
 - ❖ Test Execution
 - ❖ Data Extraction*
 - ❖ Rule Validation*
 - ❖ Verdicts
 - ❖ Actions
- # bin/testanalyzer run

*bin/testanalyzer post

Analyzing Test within the Pipeline



Data Schema



Extraction examples

❖ Demo Queries

Rules

- ❖ Common behavior:
 - ❖ Return code validation
 - ❖ Test Case step
 - ❖ Regex where applies
 - ❖ Dates
 - ❖ System information
- ❖ Stable suites
 - ❖ 3 successful execution



Defects

❖ Walkthrough Demo

Summary

- ❑ Test Analysis becomes a demanding task on CI environments.
- ❑ A framework to analyze and provide verdicts helps on agile adoption.
- ❑ Rules need to be defined according to product and conditions.

Q&A

