

Microsoft FileServer Protocol Test Suite

Overview and Updates

Presented by

Mengyan (Helen) Lu

Obaro Ogbo

Senior Software Engineering Manager

Software Engineer II

Agenda

- FileServer Test Suite Overview
- Test Suite Open Source & Cross-Platform
- What's New
- Demo

FileServer Test Suite

Overview

What is a Windows Protocol Test Suite

Evaluates whether a protocol implementation meets certain interoperability requirements.

- Originally developed for in-house testing of Microsoft Open Specifications.
- Used to test/verify Windows behavior.
- Also used to test 3rd-party implementations.

Do not cover every protocol requirement, and do not certify an implementation, but can be a useful indication of interoperability.

FileServer Test Suite Scope

Protocols

[MS-SMB2]: Server Message Block (SMB) Protocol Versions 2 and 3

[MS-FSA]: File System Algorithms

[MS-SWN]: Service Witness Protocol

[MS-RSVD]: Remote Shared Virtual Disk Protocol

[MS-FSRVP]: File Server Remote VSS Protocol

[MS-SQOS]: Storage Quality of Service Protocol

[MS-DFSC]: Distributed File System (DFS): Referral Protocol

[MS-HVRS]: Hyper-V Remote Storage Profile

Messages

Negotiate (Negotiate Contexts)

Session Setup

Tree Connect/Disconnect

Create/Close (Create Contexts)

IOCTL

Query Directory

Query Info/Set Info

...

FileServer Test Suite Features

Negotiate

Session Mgmt.

Tree Mgmt.

Create/Close

IOCtl

Credit Mgmt.

Signing

Leasing/Oplock

Durable Handle

Multi Channel

Persistent Handle

Replay

App Instance Id

Encryption

Compression

Dialect
2.002

Dialect
2.1

Dialect
3.0

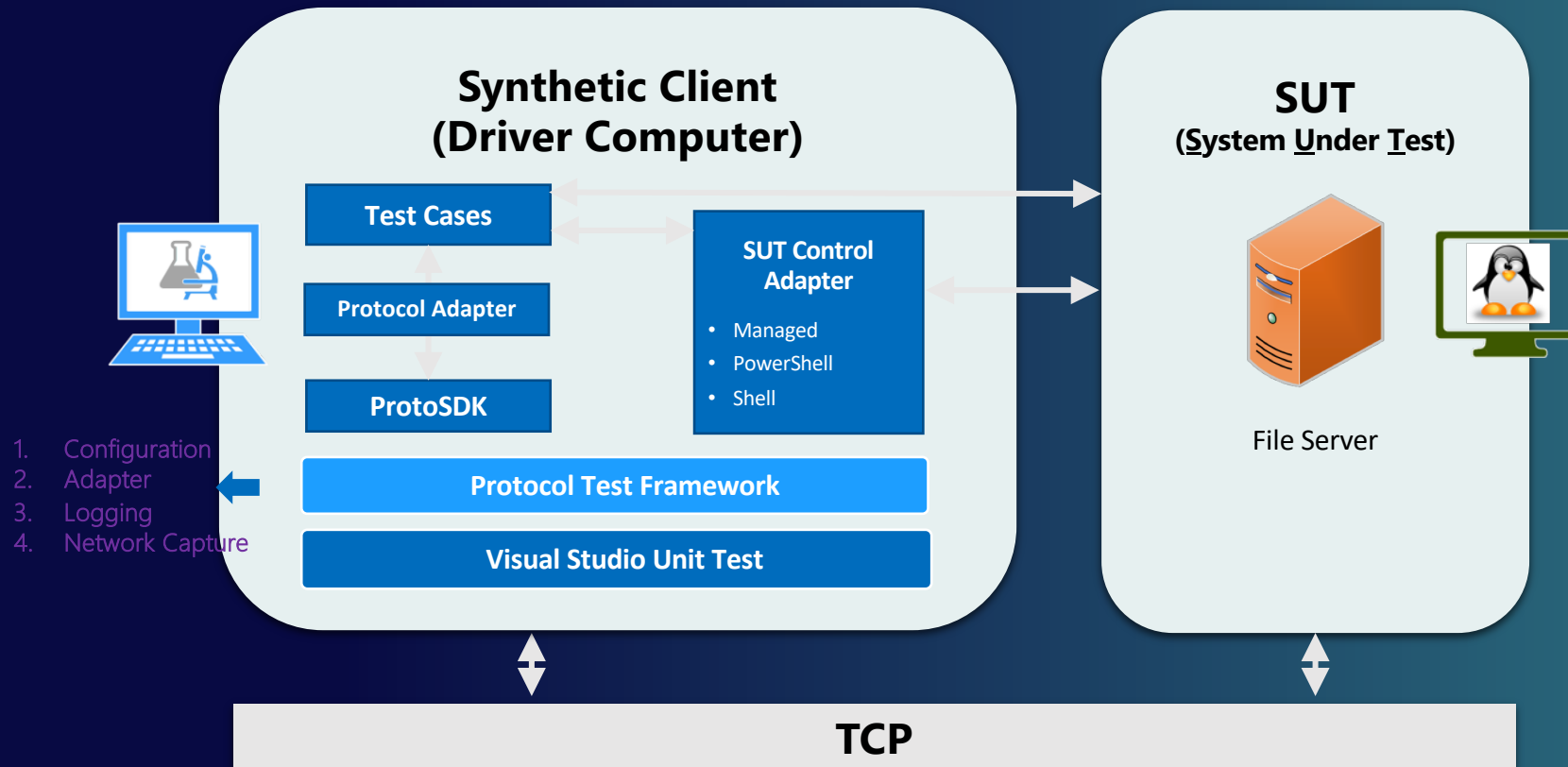
Dialect
3.02

Dialect
3.11

FileServer Test Suite Approach

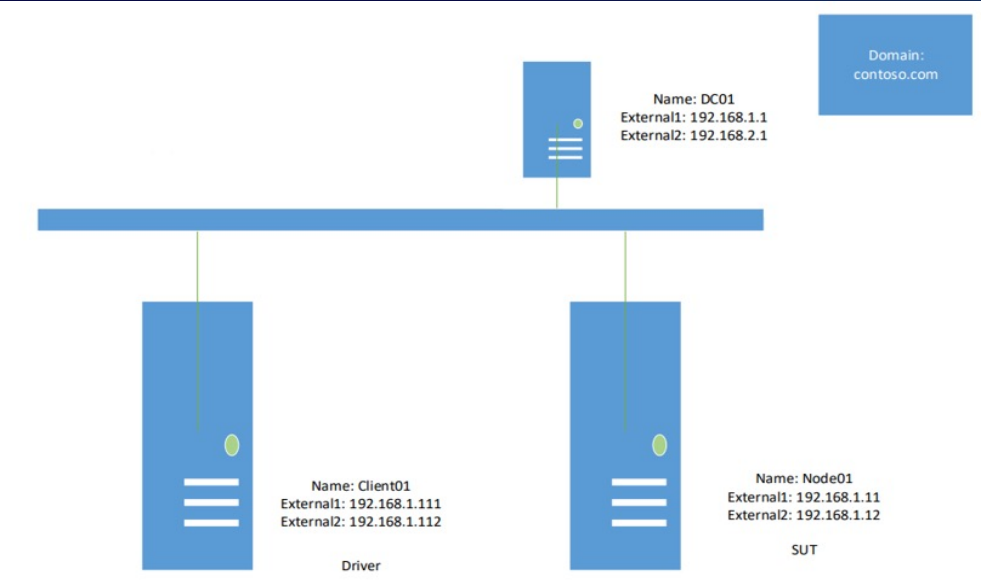
- Traditional Test
 - Covers basic functionalities and scenarios
- Model-based Test
 - 2K+ test cases generated by 13 models
 - Better coverage on
 - Parameter combination
 - Message sequence
 - Negative tests

FileServer Test Suite Infrastructure

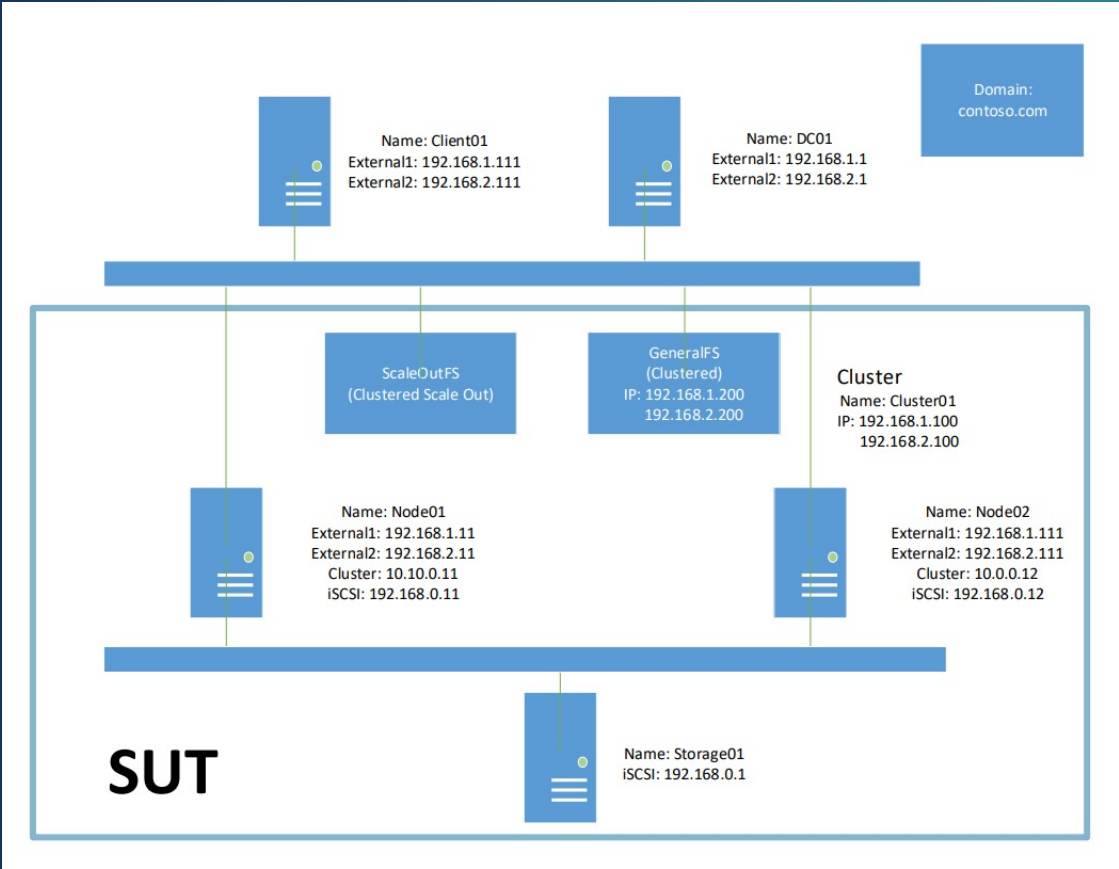


FileServer Test Suite Environment

FileServer Standard



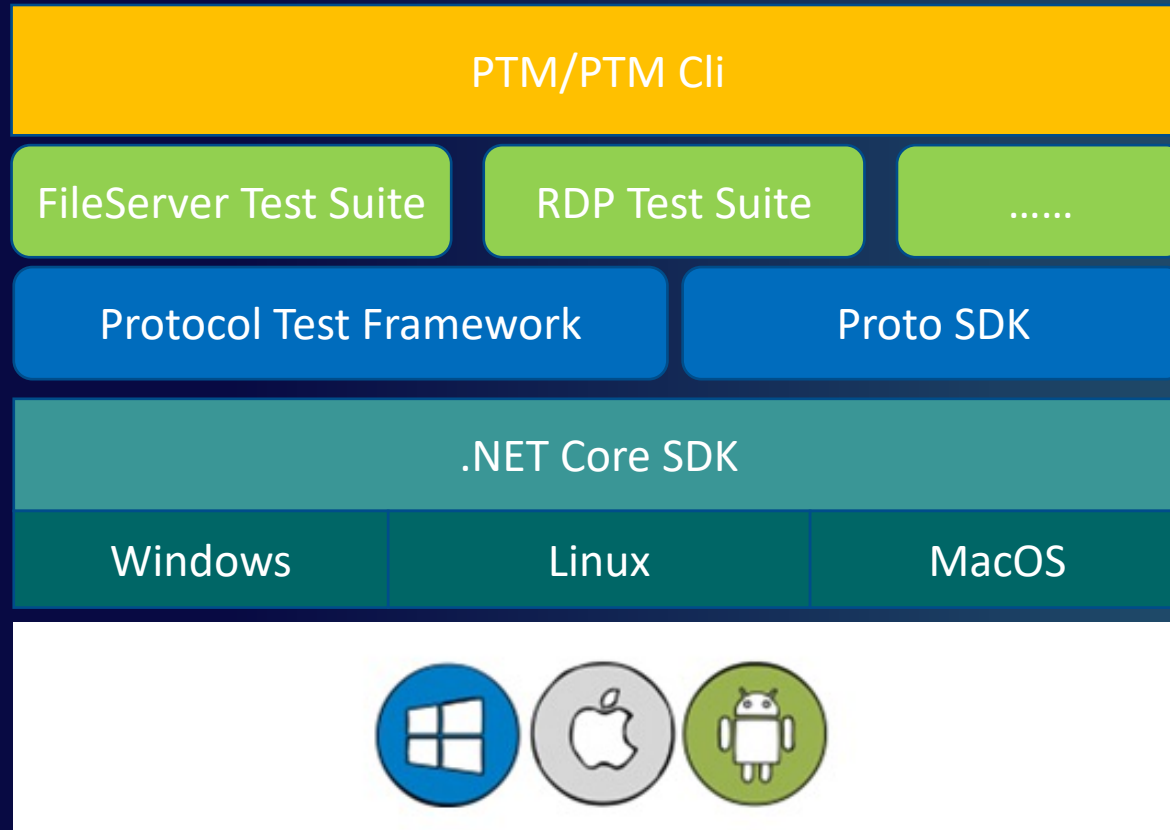
FileServer Cluster



Windows Protocol Test Suite

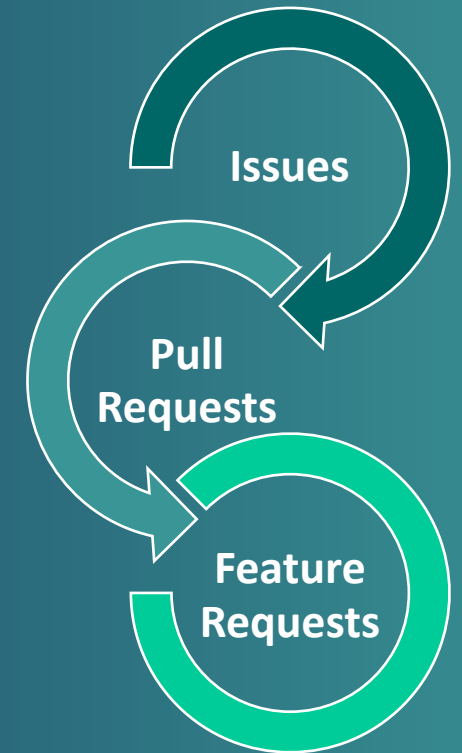
Open Source & Cross-Platform

Windows Protocol Test Suite Cross Platform



Open sourced on GitHub since 2016

<https://github.com/Microsoft/ProtocolTestFramework>

A sphere covered in various terms related to open source software, with "OPEN SOURCE" prominently displayed in large green letters. Other visible terms include "research", "software", "distribution", "copyright", "internet", "applications", "ideas", "reuse", "project", "choice", "community", "application", "information", "free", "choice", "contributions", "software", "copyright", "community", "application", "information".

What's New

What's New

Obaro Ogbo

Software Engineer II

Windows Protocol Test Suites Updates

Windows Protocol Test Suites Release v4.21.5.0

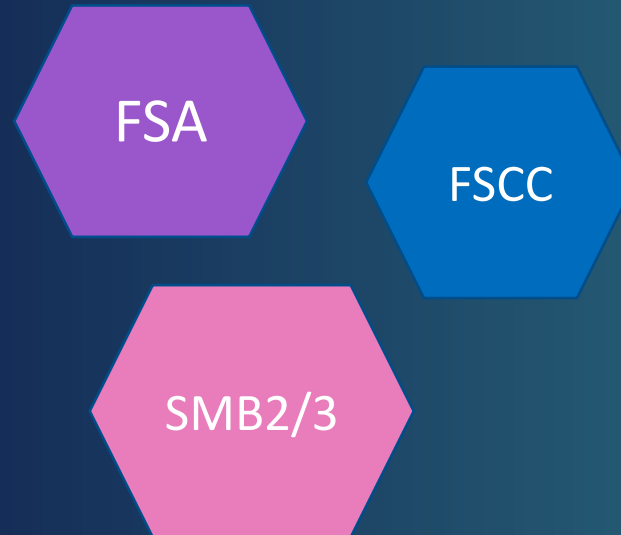
<https://github.com/Microsoft/WindowsProtocolTestSuites/releases/tag/4.21.5.0>

File Server Test Suites

- Migrated to .NET 5
- Added new tests
- Bug fixes

Protocol Test Manager

- Protocol Test Manager Command Line Interface (PTMCLI) migrated to .NET 5
- PTMTestLogger removed from PTMCLI
- Bug fixes



File Server Test Suite Updates

New test cases

- Check query normalized file name
- Check colon and back slash contained in file name

- Added more query info cases
- Check file basic information attributes are supported
- Check file modification algorithm
- Check creation, access and write times

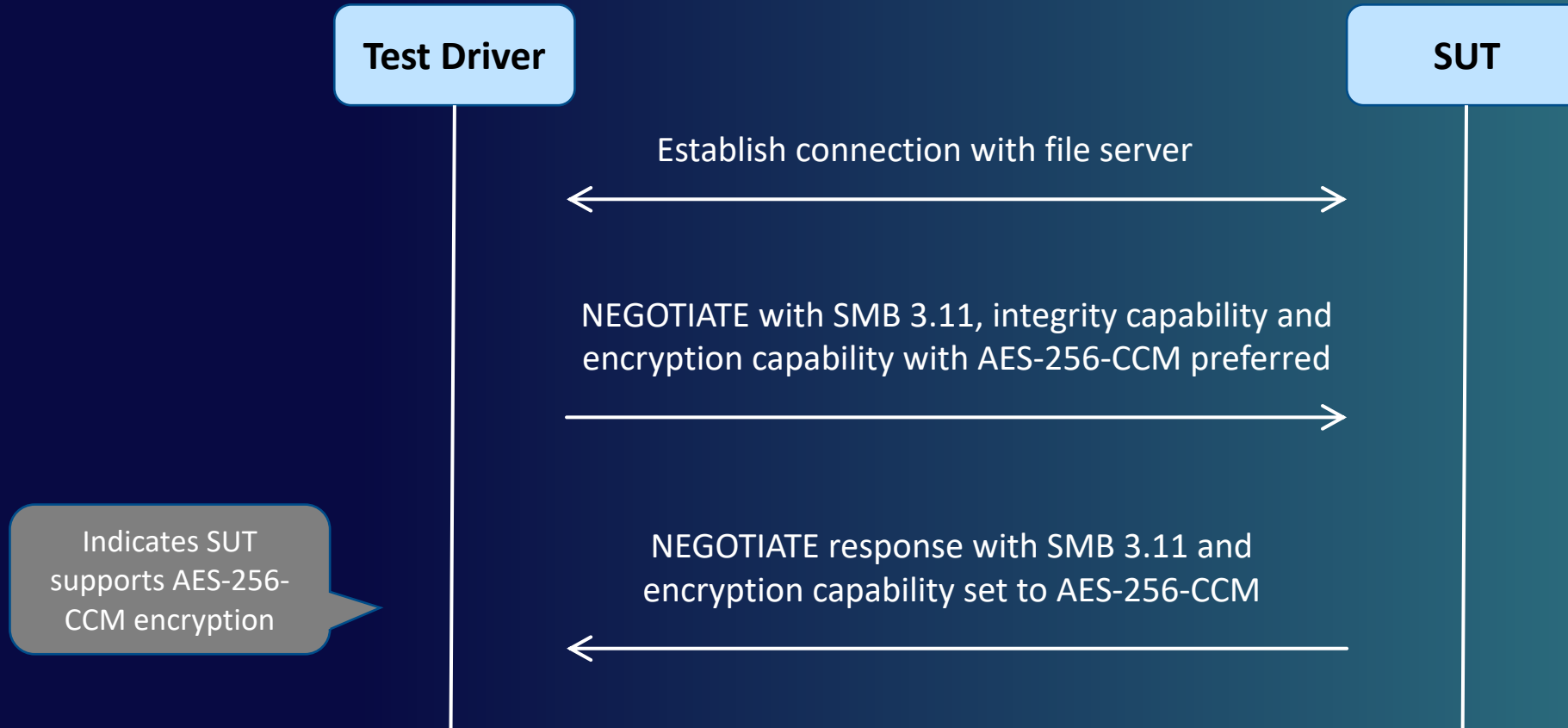
- Check oplock keys comparison
- Confirm server can handle two lease requests with the same lease key
- AES-256-CCM and AES-256-GCM encryption

New Tests for AES-256 Encryption

- AES-256-CCM and AES-256-GCM feature for Windows 21H1
 - Detailed description available in [MS-SMB2] v20210407
https://docs.microsoft.com/en-us/openspecs/windows_protocols/ms-smb2
- Negotiation
- Encryption

AES-256 Negotiation test example

BVT_Negotiate_SMB311_Preauthentication_Encryption_AES_256_CCM

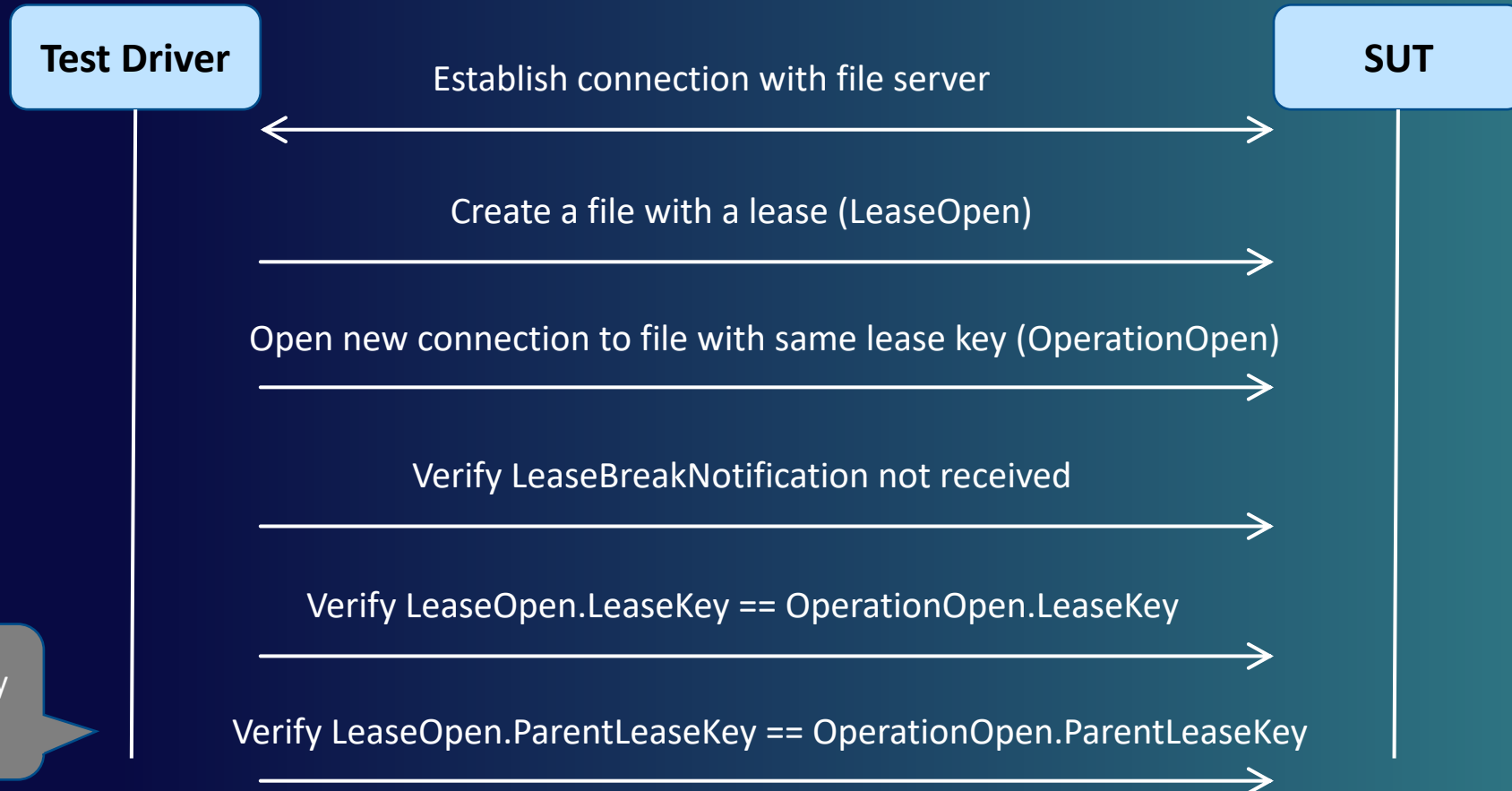


New Tests for Oplock Lease Keys

- Algorithm to compare Oplock Keys
 - Detailed description available in [MS-FSA] v20210407
https://docs.microsoft.com/en-us/openspecs/windows_protocols/ms-fsa
- 7 new tests
- Files and Directories
- Supports SMB 2.1 and greater

Oplock Keys test example

Comparing_Same_LeaseKeysV2



Algorithm correctly
implemented



Demo