

Open-FCoE Architecture

libfc, fcoe

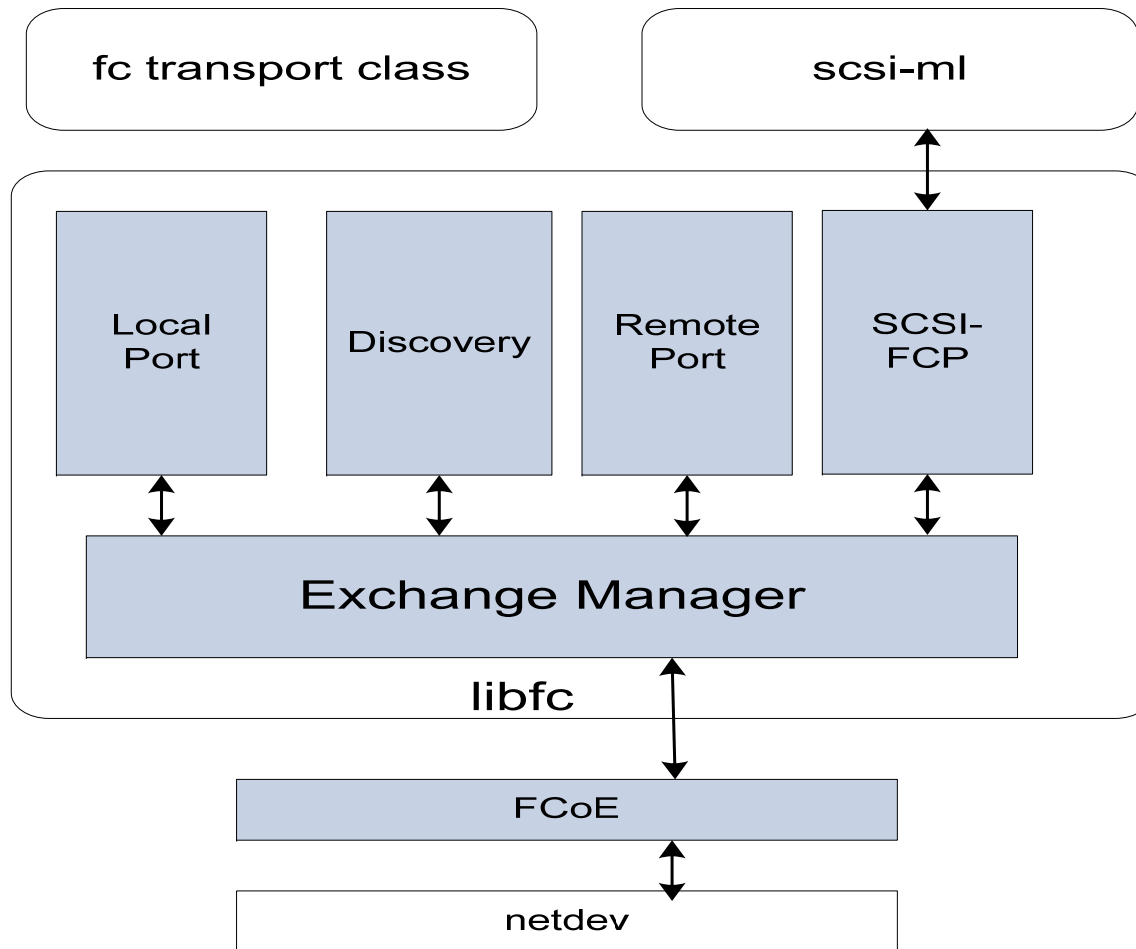
What is Open-FCoE?

- ❑ The Open-FCoE project is an implementation of a FCoE initiator for the Linux OS targeting in-kernel acceptance and then distribution inclusion. The project enhances the Linux kernel by adding the following,
 - ❑ A modular and reusable FC library
 - ❑ A FCoE module that works for any Ethernet-capable adapter
- ❑ Open-FCoE is LLD of the SCSI subsystem as is any existing FC HBA
- ❑ Hosted at www.Open-FCoE.org
 - ❑ git repositories
 - ❑ Development mailing list
 - ❑ Bugzilla
 - ❑ Wiki
 - ❑ Announcements / Blog
- ❑ Desire is to build a FCoE community (not Intel only)

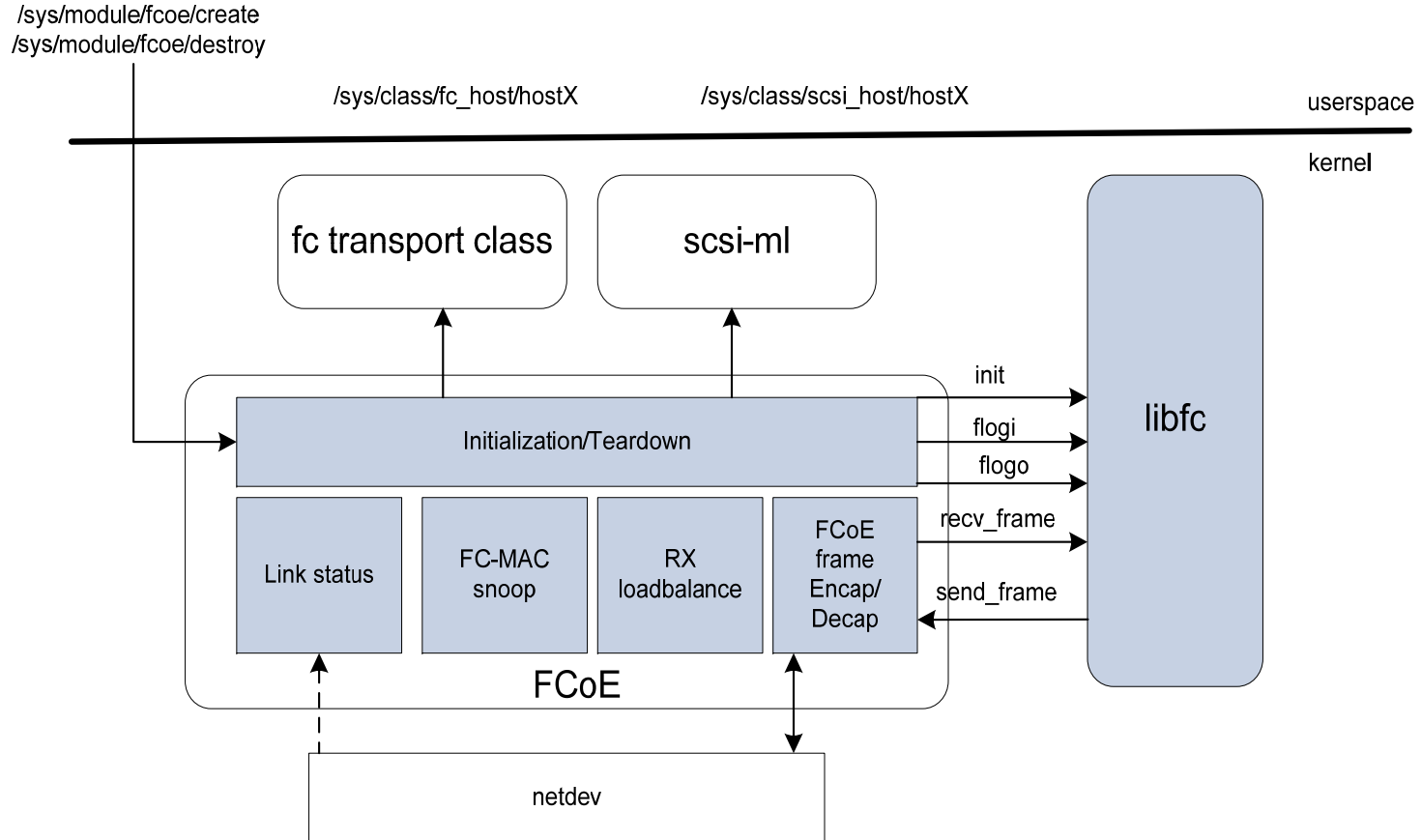
Open-FCoE: Current Status

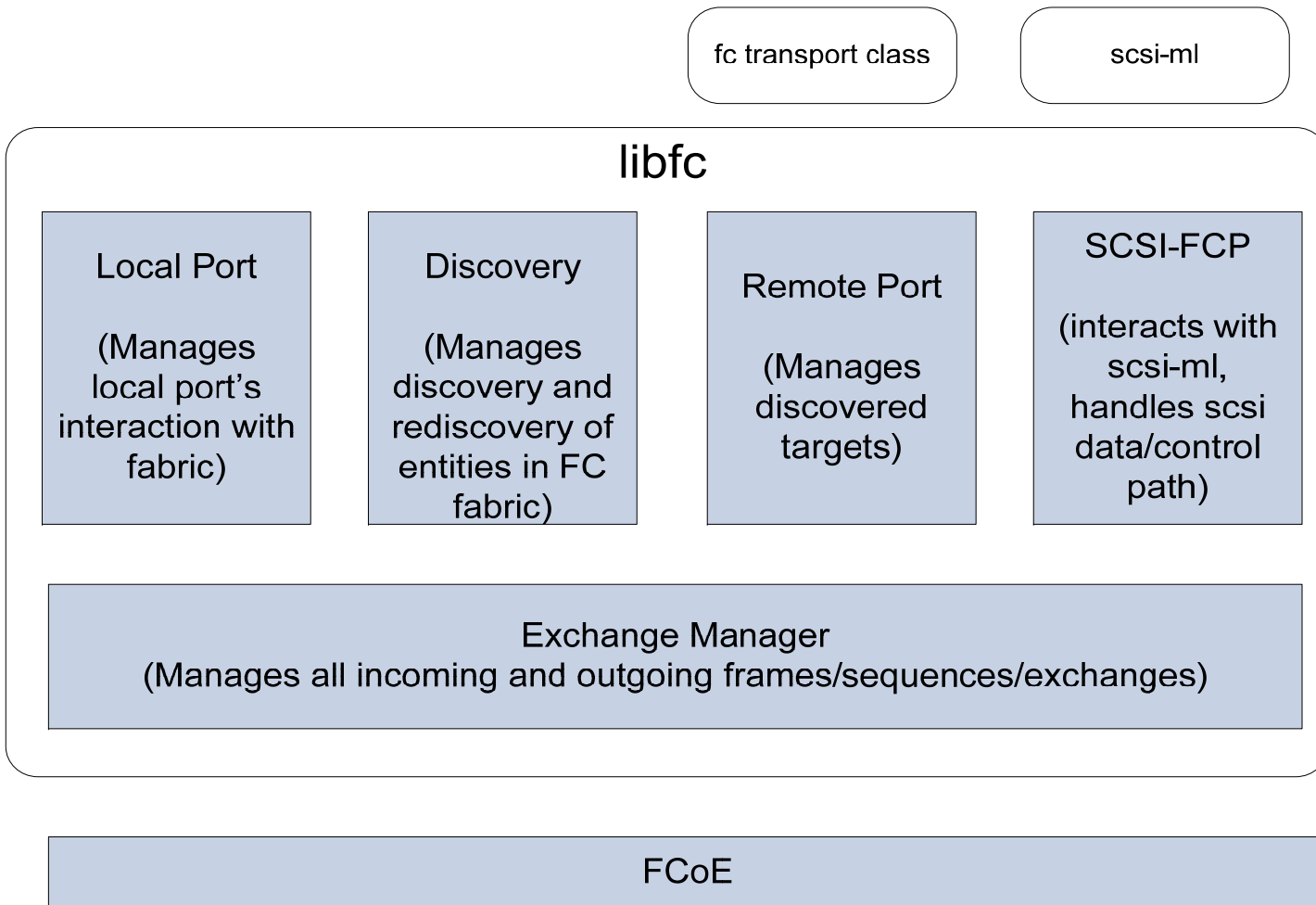
- ❑ Initial Community Feedback
 - ❑ Re-architect stack to create FC assist library
 - ❑ Need better utilization of existing FC transport class infrastructure
- ❑ Current Status
 - ❑ Re-architecture Complete
 - ❑ Created a re-usable FC library for any FC HBA driver
 - ❑ Using FC transport class for rport management and sysfs for displaying information to userspace
 - ❑ Over 1,000 patches contributed to re-architecture
 - ❑ Reduced size
 - ❑ Pre-arch 85 files, 23,114 lines
 - ❑ Re-arch 25 files, 12,315 lines
 - ❑ RFC (Request For Comments) submitted to linux-scsi on 08/08/08
- ❑ TODO
 - ❑ Userspace components
 - ❑ fcoeadm
 - ❑ HBAAPI vendor library == HBAAPI Linux library
 - ❑ DCB integration
 - ❑ Stack validation and defect fixing
 - ❑ FIP (FCoE Initialization Protocol)

Open-FCoE Stack

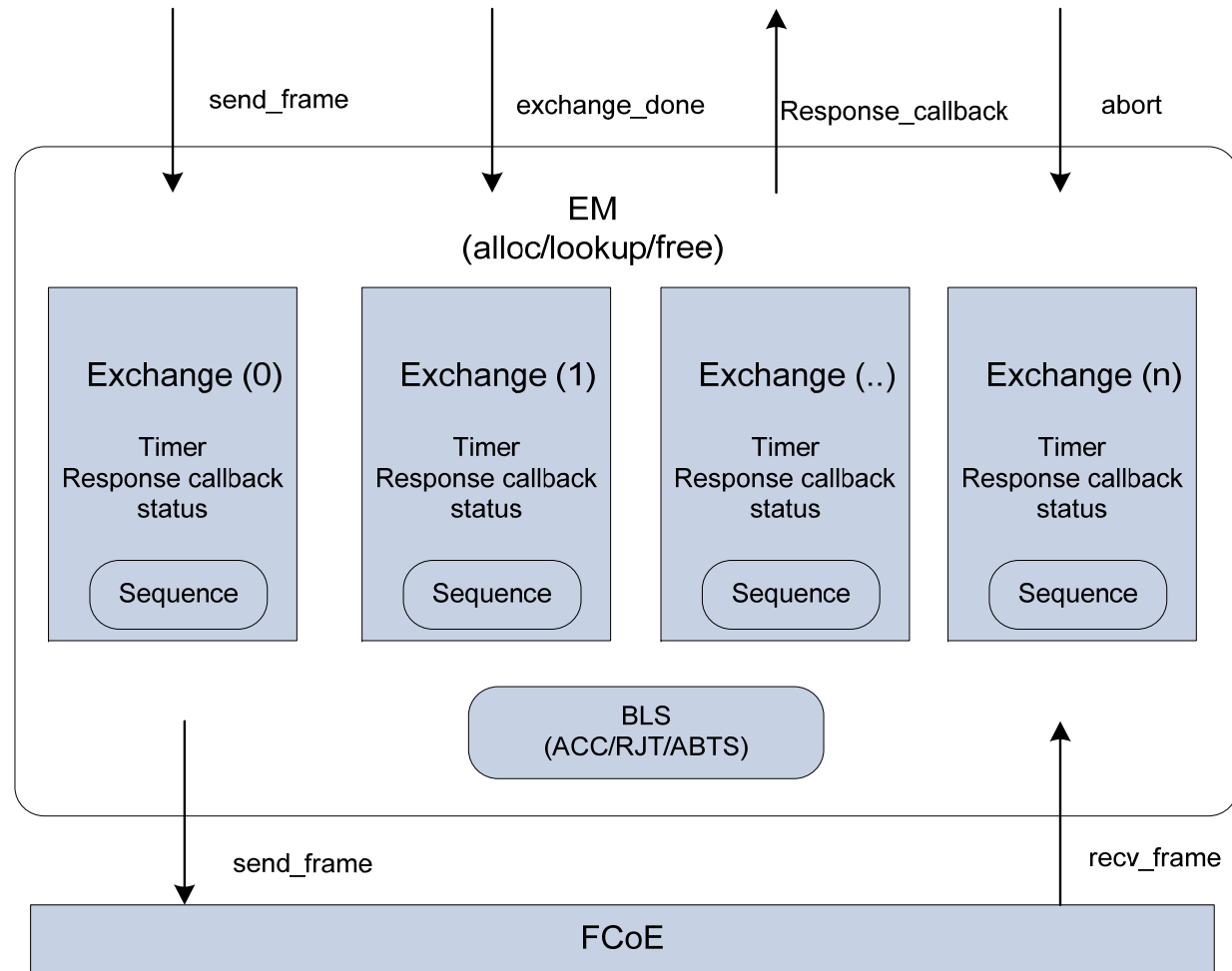


FCoE module

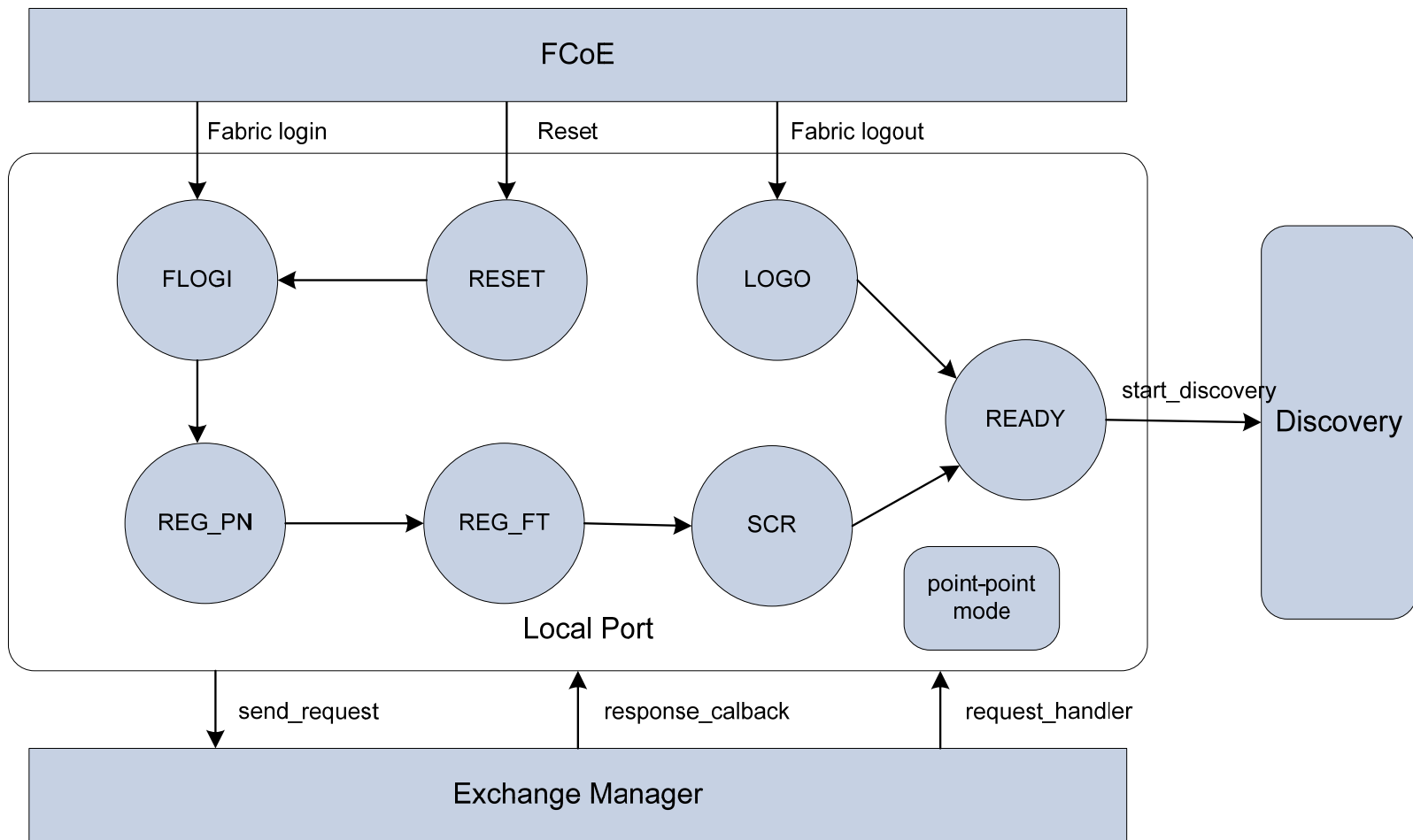


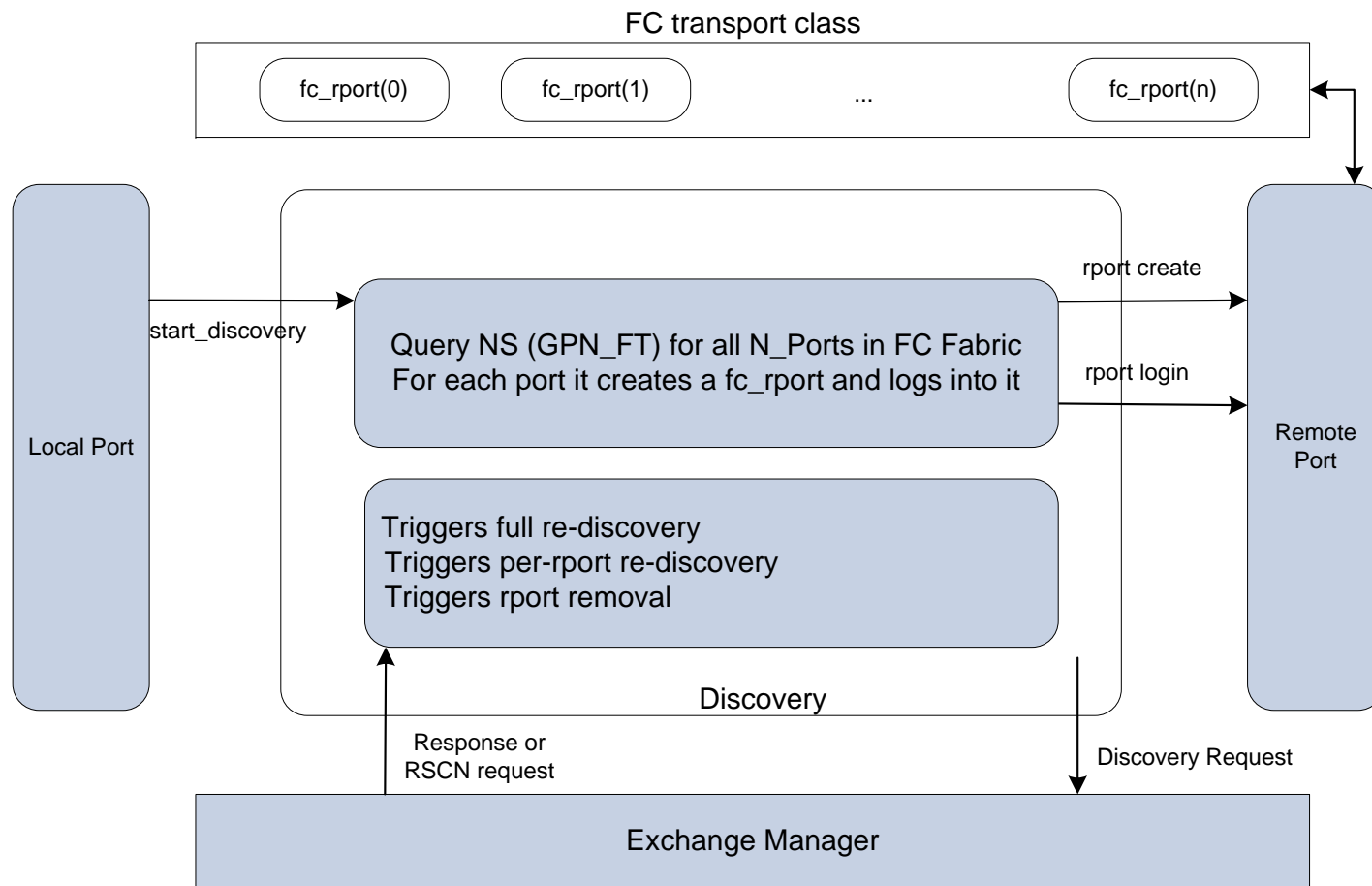


Exchange Manager



Local Port





Remote Port

